

User Manual



CNV[®]

Preface

Dear users:

We're pleased to present to you the *Pro Hot&Cold Ozone Vaporizer Facial Steamer Skin Rejuvenation Beauty Machine* that mainly focus on dry skin, sunburned skin, excessive sebum production, enlarged pores, etc. It aims to deliver a safe and effective beauty experience through high-tech means. *Pro Hot&Cold Ozone Vaporizer Facial Steamer Skin Rejuvenation Beauty Machine* is a specialized skin care machine for professional use, which needs to be handled by professionals with proper training. Any improper use will result in adverse consequences. Therefore we advise any personnel to read this guide thoroughly and follow the instructions strictly before operation.

We believe our quality product will bring in good returns on your end. Also, you can count on our worry-free after-sales service.

Thank you!

Table of Contents

Preface
Part I
Brief Introduction
Advantages
Working Principle
Main Effects
Applicable Range
Notes After Treatment
How To Use
Part II
1. Detailed Operations
2. Technical Parameters
3. Dos and Don'ts
4. Troubleshooting & Solutions
5. FAQs
6. Packing List
7. Operational Diagrams

Part I

Brief Introduction

Pro Hot&Cold Ozone Vaporizer Facial Steamer Skin Rejuvenation Beauty Machine is currently the most popular duo steamer that serves to deep hydrate, brighten, calm skin and shrink pores, etc. It can be integrated with facial or other skin care treatment or be used alone. Moreover, it's convenient and easy to operate. It solves various skin issues for beauty-lovers. This device requires no injection, no medication, no operation, thus having no side-effects. It is used externally throughout the entire process and comes with immediate result. Cold and hot steamer uses ultrasonic atomization+steam to cleanse, tighten, hydrate skin and shrink pores, which brings about healthier sebaceous gland cells, providing skin with better absorption rate and protection.

Advantages

1. Cold and hot steamer addresses various facial skin issues.
2. It's easy, convenient, quick and has no side effects.
3. You can choose cold or hot steamer functions based on your own skin condition.
4. It's professional, time-saving, effort-saving and has significant results.
5. 360° rotatable nozzle is adjustable for different heights, guaranteeing a comfortable angle and wide steaming range.
6. It is safe to use. When the water level is too high or too low, it can automatically cut off power and avoid burning.
7. No consumption, low cost, wider range of treatment and rapid and significant effect.

Working Principles

Hot and Cold Steamer

The cold and hot steamer uses ultrasonic atomization + water vapor technologies to achieve cleaning, firming, hydration, pore minimization and other beauty effects, which brings about healthier sebaceous gland cells, providing skin with better absorption rate and protection.

Hot Steam Facial: Hot steamer heats up the water through the heating rod to form water steam. The infiltration of the steam makes the epidermis cells expand and soften, facilitate the removal of aging keratinocytes, leaving skin bright, clean and tender. The elasticity and luster of the skin are determined by the content of collagen and hydrophilic factor. It can promote the regeneration of skin collagen, activate the

hydrophilic factor of skin moisture, and make the skin more delicate, smooth, bright and translucent.

Cold Steam Facial: Cold steamer uses ultrasonic wave to atomize water molecules. Cold steam will not make the skin loose. Instead, fine water mist can make the skin better absorb moisture, improve the human body cold resistance, and is conducive to the prevention of colds. It can also inhibit melanin cells, fade dark spots, calm skin, shrink pores, reduce redness and swelling, and fight allergies, etc.

Cold Steam + Hot Steam: Alternate cold and hot steam can not only cleanse skin, but also help dilate and contract blood vessels at skin surface so as to allow skin breathe freely, and boost facial blood circulation.

Main Effects

1. Cleanse skin.
2. Promote the instant absorption of essential ingredients and restore the skin to a healthy state.
3. Activate hydrophilic factor and replenish skin with moisture.
4. Promote keratin regeneration, reduce wrinkles, and return skin to its smooth and refined state.
5. Ozone sterilization and inflammation helps to effectively prevent skin diseases and skin inflammation.
6. Highly moisturize, improve dryness and increase skin activity.
7. Smooth and brighten skin.
8. Enhance skin vitality and calm skin.
9. Relieves sensitivity, redness and inflammation.

Applicable Range

1. Those with dehydrated and coarse skin.
2. Those with poor moisture lock-in rate.
3. Those with sensitive skin that is prone to turn red and itchy.
4. Those with hydrated and damaged skin under long-term sun exposure.
5. Those with sallow, lusterless skin and uneven skin tone.
6. Those with oil and water imbalance, enlarged pores and poor skin absorption rate.

Notes after Treatment

1. Keep skin hydrated and always use sun protection.
2. Avoid staying up late, smoking or drinking. Eat more fruits and vegetables and less

greasy food.

3. Apply a hydrating sheet mask at least 3 times a week.
4. Apply moisturizing product after each treatment.

How To Use

1. After cleansing, treat with hot steam + sterilization light for 5-10 minutes to open the pores so that skin absorbs products better. After treatment, skin will be fully hydrated (for acne-prone skin and sensitive skin, it's advised to use cold steam).
2. Deep cleanse and remove blackheads and blockages in pores.
3. Treat with cold steam for 5-10 minutes to shrink pores and absorb moisture. Skin appears to be visibly smooth afterwards.
4. Apply sheet mask.
5. Apply toner+ essence + lotion, which will absorb better than usual.

Part II

1. Detailed Operation

Detailed installation is as follows:

Package Including



How To Install



1.1 Detailed Functions: Hot Steam



Hot Steam

Click to turn on hot steam (for 5-10 min).



Hot Steam Light Indicator

The red light turns on after you turn on hot steam function.



Ozone Sterilization Light & Hot Steam Mist Output Volume

1. Click once to turn on the sterilization function. The light indicator turns on.
2. Turn on the LIGHT to increase mist volume and turn off the LIGHT to decrease the mist volume.

Note: You can only turn on LIGHT after turning on HOT.



Ozone Sterilization Light Indicator

The red light turns on after you turn on light function.



Hot Steam Water Inlet

Remove the cover to fill the glass container with (better be purified water as tap water may contain bacteria or skin damaging substances)



Hot Steam Water Container

Fill in fresh water every day.

Twist clockwise to remove it from the device and twist counterclockwise to install.

Note: Make sure the glass container is tightly installed before turning on the device to avoid possible damage. If not 100% tightened, the water steam may come out of the glass container. Turn off the device first and wait for the water to cool down, then re-install the glass container again.



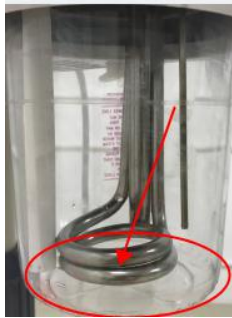
MAX Line

Fill in enough water but make it below the MAX line. The device will not be able to work when water volume surpasses the MAX line.



Water Level Detector

The device enters auto-off mode and the alarm goes off when the water level is beneath the detector.



DO NOT turn on the device when there's no water in the glass container or water level is beneath the detector to avoid possible damage.

1.2 Detailed Functions: Cold Steam



Cold Steam & Cold Steam Mist Output Volume

Turn clockwise to turn on cold steam function/increase the mist volume and counterclockwise to decrease the mist volume.

Under normal circumstances, cold steam treatment lasts from 10-15 min. It's not advised to go over 20 min to avoid discomfort.






Cold Steam Light Indicator

The red light turns on after you turn on cold steam function.



Mist Volume

Turn the  all the way to right to the MAX volume , and all the way to the left to the MIN volume .



Cold Steam Water Inlet

Remove the cold steamer to fill the cold steam water tank with (better be purified water as tap water may contain bacteria or skin damaging substances)



Cold Steam Drainage

Take off the white rubber plug to drain water tank.

It is advised to clean the cold steam water tank once a week. Add a few vinegar and wait overnight, then drain all the liquid.

Note: Make sure to insert the rubber plug before fill the cold steam water tank with water.



Cold and hot steamer can work at the same time.

2. Technical Parameters

Voltage 220V- 240V/ 50Hz;

100V- 120V/ 60Hz

Power 750W

3. Dos and Dont's

1. Use a grounding pin and make sure the power socket of the device is properly connected before each operation.
2. Ensure that the voltage of the device is appropriate. If the voltage of the local power supply is unstable, we recommend that users increase to the matching power voltage.
3. In order to ensure the therapeutic effect and normal service life expectancy of the device, please use the specified accessories provided or recommended by the original manufacturer.
4. The device should not be placed in wet environment or near water, nor should they be directly exposed to sunlight.

5. Do not place the device near a strong heat source, because this may affect the life and normal use of the device.
6. Please restrain from using the device on eyes, thyroid, parathyroid, testicles, abdomen of pregnant women, and pacemakers.
7. Patients who are suffering from illness should consult with a doctor and gain permission from the doctor before using.
8. Please turn off the power switch of the device, and ensure that the total power supply of the device is turned off before the staff leaves after daily use, so as to ensure the safety of the electrical products.
9. Use device or train device operators in strict accordance with instructions in the user manual.
10. Clean the instrument with normal saline after operation to ensure its cleanliness and hygiene and prolong its service life.
11. It is recommended to use pure water, mineral water and other drinkable water. Toner, milk or essential oil are strictly prohibited to avoid corrosion and unpleasant smell in the sink.
12. Do not tilt the device upside down when using.
13. Do not rinse the device directly with water.
14. Do not spray directly to the nose during the operation of the device to avoid troubled breathing.
15. The hot and cold water tanks should be cleaned frequently, and the longest time should not be more than one week. It is recommended to change the water every day.
16. For acne-prone, sensitive skin and allergic skin, please choose the cold spray function instead of the hot spray function.
17. If the device is not used for a long time, please drain the water in the tank and replace it with fresh water before use.
18. Be very careful when cleaning glass light bulb to not break it.
19. Make sure there is water in the glass container before starting the device and it is within the normal water level.
20. Do not turn on the machine when there is no water or the water level is low. Otherwise, the alarm will go off and the device will shut down automatically.
21. Before using the hot steam, please check whether the water in the water tank is above the minimum water level. When the water level is below the water level, please add water in time to avoid damaging the device by dry burning.
22. Make sure the glass container is tightly installed before turning on the device to avoid possible damage. If not 100% tightened, the water steam may come out of the glass container. Turn off the device first and wait for the water to cool down, then re-install the glass container again.
23. Make sure to insert the rubber plug before fill the cold steam water tank with water.
24. Uneven cold steam means that the water in the water tank is low, so water should be added in time. The device should not run in the absence of water.
25. After using for a period of time, please put a small amount of vinegar in water and soak overnight. It is recommended to clean once a week.

4. Troubleshooting & Solutions

1. The device cannot be started and the key light of the instrument does not turn on?

- A. Ensure that the power cord is connected to an effective power outlet.
- B. If the above method cannot address the issue, please contact the distributor of the instrument for assistance.

2. When the device is on, the key light is on, but the water in the glass container is not being boiled?

- A. Please contact the distributor of the instrument for assistance.

3. No steam after water heating?

- A. Please check whether the water in the glass container exceeds the MAX line.
- B. Please check whether the nozzle of the device is blocked.
- C. If the above methods cannot address the issue, please contact the distributor of the instrument for assistance.

5. FAQs

1. Q: Do I have to combine cold/hot steam treatment with other products?

A: No, the hot and cold steam can be used in combination with other product, alone or in combination with other beauty equipment. The best treatment is to use hot steam to open pores before applying sheet mask (You can also use hot steam together with sheet mask to promote the absorption of the essence), and then use cold steam to contract pores and calm the skin.

2.Q: Is the device applicable to sensitive skin?

A: Yes, hot and cold steam is suitable for any skin type. For those with sensitive skin or skin allergies, you can use cold steam function. Cold steam can calm skin, eliminate redness and swelling, alleviate sensitive skin and shrink pores. Hot steam can open pores, promote the absorption of the product, the activation water hydrophilic factors, etc.


3. Q: How often and how long is each treatment?

A: When combined with cleansing treatment or other beauty devices, you can use it once a week. When used alone, you can receive the treatment daily. The hot steam can be used for about 10 minutes each time, and the cold steam can be used for no more than 20 minutes each time.

6. Packing List

- 1 x Main Machine
- 1 x Long Standing Holder
- 1 x Short Standing Holder
- 2 x Base Bar
- 3 x Cold Steamer Accessories (nozzle, clear PVC tube, connector)
- 4 x Swivel Castor
- 1 x Screw
- 1 x Metal Plate
- 1 x Black Fixator
- 1 x Wrench

7. Operational Diagrams

Parameters	Product	Techniques	Diagrams
Cleaning&Hydrating: 60 min, once/week			
Hot Steam: ON Sterilization Light: ON Cold Steam: ON Mist: 50%-100% Adjust the mist volume to	Makeup remover+ Cleanser+ Blackhead export liquid+ Hydra facial device+ One-off compact mask+ Astringent+ Sheet mask	<ol style="list-style-type: none"> 1. Remove makeup on face and neck, 2 min. 2. Cleanse face and neck area with cleanser, 3 min. 3. Apply toner. 4. Turn on hot steam function and sterilization function and preheat. 5. Wet cotton pads with blackhead export liquid and apply them on T zone. 6. Hot Steam Pore Opening Aim the hot steamer at the face of the customer. Adjust height and distance. Wait for 	Technique 9 

<p>whatever you're most comfortable with</p>		<p>5-10 min.</p> <p>7. Turn off the device.</p> <p>8. Remove cotton pads.</p> <p>9. Hydra Facial Skin Cleansing</p> <p>Apply pressure on the probe and then twist to lift the probe up. Slowly move along forehead, nose and chin, around 5-8 min.</p> <p>(Double the treatment on nose skin congestion, 2-3 times.)</p> <p>10. Move the probe on cheeks. Apply pressure, twist and lift it up, 2 times.</p> <p>11. Do the same on the other cheek.</p> <p>12. Wash face clean, 1 min.</p> <p>13. Wet one-off compact mask with astringent and apply on the face.</p> <p>(Select different base mask for different skin needs.)</p> <p>14. Cold Steam Pore Minimization</p> <p>Turn on the cold steam function. Aim the cold steamer at the face of the customer. Adjust height and distance. Wait for around 10 min.</p> <p>15. Remove the base and apply hydrating sheet mask.</p> <p>16. Hot Steam Essence Infusion</p> <p>Turn on the hot steam function. Wait for 2 min. Aim the hot steamer at the face of the customer. Adjust height and distance. Wait for around 10 min.</p> <p>17. Remove the mask.</p> <p>18. Wash face clean.</p> <p>19. Apply toner, essence,</p>	
--	--	---	--

		emulsion and sunscreen.	
--	--	-------------------------	--

Recommended Treatment:

Each treatment takes around 30 min. When combined with cleansing treatment or other beauty devices, you can use it once a week. When used alone, you can receive the treatment daily. Before treatment, use hot steam to open up pores and help skin absorb nutrients. After treatment, use cold steam to calm skin and shrink pores. One session brings visible skin hydration. One month of persistent use help hydrate, brighten skin and better skin absorption. Long term use help skin lock in moisture, boost metabolism, leaving skin healthy.

CNV[®]

cnvbeauty.com