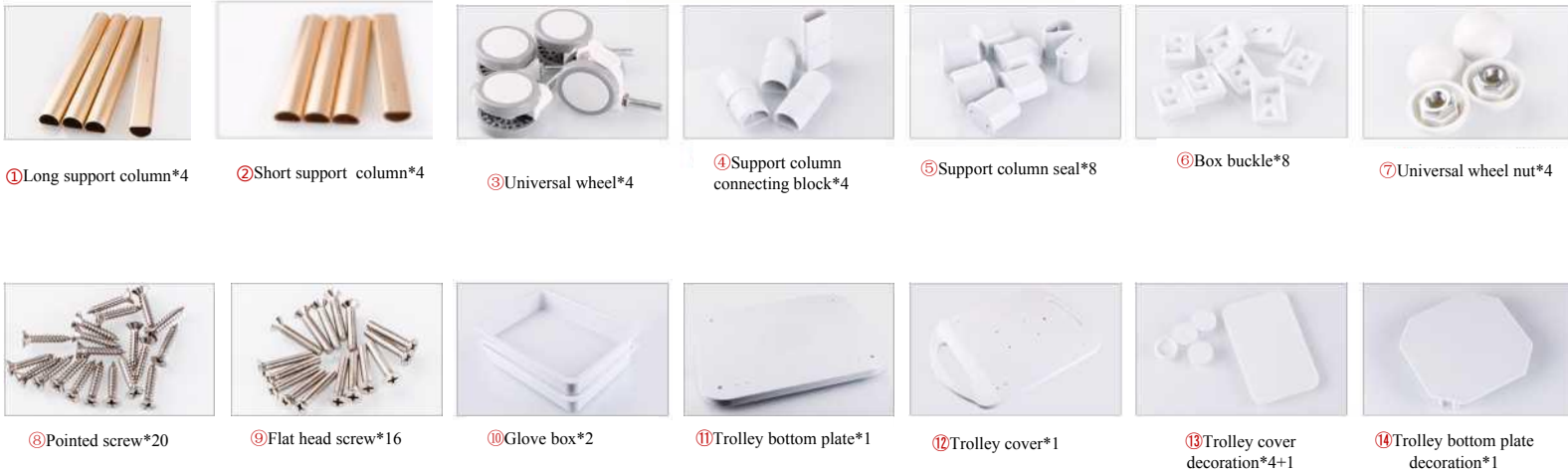


Installation Instruction

CNV[®]

cnvbeauty.com

1. All Accessories of Trolley



2. Installation Steps

Step 1



Connect the short support column (2) and the long support column (1) with the connecting block (4). Then seal the gap of the connected support column with the support column seal (5)

Note: the screw holes of the support column can be connected only after they are aligned in parallel, otherwise the buckle can not be aligned.

Step 2



Tighten with flat head screw (9) through round hole of buckle (6) and round hole of support column (1,2)

Note: the short support column is at the bottom, the long one is on the top. Do not install the buckle in reverse

Step 3



Use the threaded part of the universal wheel (3) to pass through the round hole of the bottom plate (11) of the trolley, and then tighten the nut (7)

Note: the two front wheels are not provided with fixed locks, while the rear wheels are provided with fixed locks.

Step 4



Connect the four support columns with pointed screws (8) through the trolley bottom plate (11) and tighten them.

Note: four short support columns is at the bottom. Do not install them in reverse

Step 5



Connect the four support columns with pointed screws (8) through the screw holes of trolley cover (12), and then tighten them

Note: the large space of trolley cover plate is the front part.

Step 6



Install the glove box (10), the trolley cover plate and the bottom plate decoration (13, 14)

The whole cart is installed